

# 40th Anniversary

Iberia & Airbus 1981- 2021

## Our history

- **A-300:** Airbus family is born
- **A-340/300:** Contemporary stage begins
- **A-340/600:** Majestic in the skies



# A-300

## Airbus family is born



### FAST WIDE-BODY JET FOR MEDIUM-RANGE FLIGHTS (1981-2002)

#### Technical data:

Propulsion: 2 engines Pratt & Withney JT9D-59 A

Range: 4.200km

Length: 53,85m

Wingspan: 44,84m

Seats: 251-255

**Airbus A-300** arrived at Iberia to replace the DC-8/63 on high density European routes and flights to the Canary Islands.

An order for four units was signed on **December 28th, 1978**, later expanded to six.

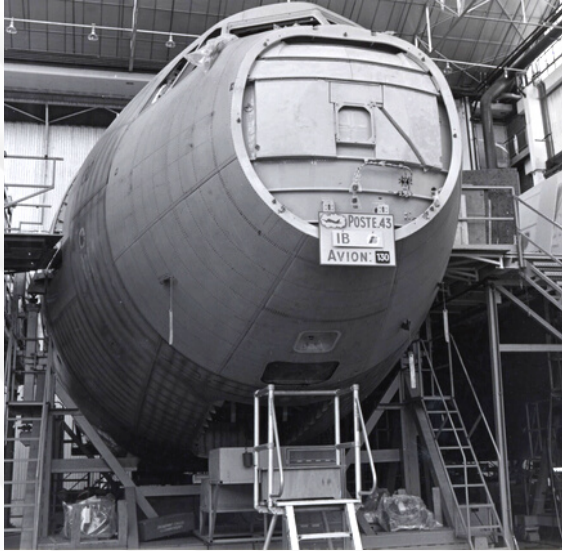
First four units arrived in **1981** and were named "**Doñana**" (EC-DLE), "**El Teide**" (EC-DLF), "**Tablas de Daimiel**" (EC-DLG) and "**Aigües Tortes**" (EC-DLH).

And in February 1982, "**Islas Cíes**" (EC-DNI) and "**Ordesa**" (EC-EC-DNR).





# A-300



## DOÑANA

Assembly of Iberia's first A-300 at the Airbus factory in Toulouse.



## ARRIVAL TO MADRID

Our **first A-300** is already at home!



## FIRST MAD-ORY FLIGHT:

On **March 29th, 1981**, "Doñana" made its **first flight bound for Paris**.

A **commemorative envelope** was created to celebrate.





# A-340/300

## Contemporary stage begins



### FOUR-ENGINE FOR LONG-HAUL FLIGHTS (1996-2018)

#### Technical data:

Propulsion: 4 engines CFM56-5C4

Range: 12.700km

Length: 63,70m

Wingspan: 63,30m

Seats: 254

On **May 11th, 1988**, Iberia and Airbus signed a historical contract by which the airline acquired 15 A320/200, took options on 7 more units of this model and joined to the group of A-340 launcher customers. Never before, an airline had committed to an aircraft model three years before its first flight and four years before its commercial entry into service.

In **1996**, the first **A-340/300** arrived to replace the DC-10 on long-haul flights to Latin America.

On **January 4th, 1998**, A-340 "**Emilia Pardo Bazán**" aircraft's high fuel efficiency allowed to fly non-stop the route to **Santiago de Chile**, covering a distance of 10,700 km in 13 hours and 30 minutes.



# A-340/300



## CONCHA ESPINA

On **February 29th, 1996** Iberia took delivery of the first A-340/300 "**Concha Espina**". The entire A-300 family was named after **illustrious Spanish women** such as "**Rosalía de Castro**", "**Teresa de Avila**" or "**Agustina de Aragon**".

The last of these aircraft arrived in **2003**.



## MADRID - CANARY ISLANDS

The **first A-340/300** flight was to **Gran Canaria** and the second to **New York**.

With their **CFM56-5 engines**, Iberia's A-340/300 incorporated a spacious configuration of **249 seats** distributed in: 5 for First Class, 42 for Business Class and 202 for Economy.



## BIRTHS ON BOARD

In **1999**, a baby was born on board an **A-340/300** bound for **Bogotá**, but he would not be the only one on an Airbus...

On **June 3th, 2011**, on an **A-319** flying to **Malabo**, **Antonino** was born and the **TCP Inma Alcazar**, who attended him during the delivery, became his godmother.





# A-340/600

## Majestic in the skies



### HIGH CAPACITY TO FLY TO LATIN AMERICA (2003-2020)

#### Technical data:

Propulsion: 4 m Rolls Royce Trent - 556

Range: 12.600km

Length: 74,77m

Wingspan: 63,45m

Seats: 359

**First A-340/600** of Iberia, christened "**Gaudí**", arrived on **June 2003**, fleet that came to replace the B-747.

Iberia eventually had **around twenty** aircraft of this model and over the course of its long history in the company, they were retrofitted to adapt them to the new passenger cabins and include the in-flight entertainment system.

#### EARLY WITHDRAWAL

The **coronavirus pandemic** required airlines to become even more efficient, to the point of accelerating projects such as Iberia's anticipating the **retirement of its A-340/600 fleet**.

As a result, Iberia now operates a long-haul fleet of **A-330 and A-350**, both new-generation aircraft, which are **highly technologically advanced and more sustainable**.





# A-340/600



## ILLUSTRIOUS SPANISH MEN

The entire **A-340 family** was named with **illustrious Spanish men** such as: "**Gaudi**", "**Joaquin Rodrigo**" or "**Antonio Machado**".



## LA ROJA'S BIG DAY

Iberia **A-340/600** took **National Team from South Africa back to Spain with World Cup**.

On its fuselage, the A-340/600 bore the words "**Champions**" and "**Proud of our national team**".

The arrival in Madrid became part of our history.



## LAST FLIGHT

Flight **IB6454** from **Quito to Madrid** on **August 2nd, 2020** ended Airbus A-340 **24 years of operations** in Iberia fleet.

In this flight travelled **296 passengers** and **5.310 kg** of cargo was transported.

## Our present

- **A-319, 320 y 321:** Airbus family grows
- **A-330:** Symbol of Iberia's transformation





# A-320, A-319 Y A-321

## Airbus family grows



### A-320 (1991)

**First A320-200 "Sierra de Cazorla"** arrived in 1990 and made its **first flight** on February 14th, 1991 to **Frankfurt**.



#### Technical data:

Propulsion: 2 engines CFM56-5B4

Range: 3.000km

Length: 37,57m

Wingspan: 34,10m

Seats: 180



### A321 (1999)

First aircraft, christened **"Benidorm"** (EC-HAC), made its maiden flight on June 5th to **Amsterdam**.



#### Technical data:

Propulsion: 2 engines CFM56-5B1

Range: 3.300km

Length: 44.51m

Wingspan: 34.10m

Seats: 220



### A319 (2000)

On January 14th, 2000, First A-319 **"Ribeira Sacra"** (EC-HGR) joined the short and medium-haul fleet.



#### Technical data:

Propulsion: 2 engines CFM56-5B5

Range: 1.800km

Length: 33,84m

Wingspan: 34,10m

Seats: 141





# A-319, 320 y 321



## 1992: THE YEAR OF SPAIN

Iberia sponsored and was the official carrier for the major events held that year: Seville World Exposition, Barcelona Olympic Games and the European Capital of Culture, held in Madrid.

The A-320 "**Isla de Cartuja**" was customized to commemorate the World Expo and we also carried the **Olympic torch**.



## ¿SIDESTICK?

In Airbus **A-320 fleet**, the traditional "**central control levers**" were replaced by the so-called "**sidestick**" or lateral control lever.



## VINTAGE

To celebrate **Iberia's 80th anniversary**, an **A-319** was painted in the colors and Iberia logo in the 1950s.

A red **horizontal stripe** in the shape of a lightning bolt ran along the fuselage of the new aircraft -as it did on the DC-4s with which Iberia inaugurated flights to South America in 1946 and on the Super Constellation- together with the **logo of the land sphere**, adorned with the typical wing insignia.







# A-330/300

## Symbol of Iberia's transformation

In **2013** Iberia received its **first three A-330/300**, which it named after Central America: "**Tikal**", "**Costa Rica**" and "**Panama**".

It is a **twin-engine aircraft**, capable of performing transatlantic routes to the **United States**.

The main advantage of this model is its **efficiency**, as it consumes around **15% less fuel**, which translates into considerable **cost savings**.

As a novelty, these aircraft were equipped with an **advanced entertainment system**: a **15.4-inch** touch screen (almost 50% more than the previous one) in Business Class and a **9-inch** touch screen in Economy.

For the first time, **Wi-Fi** is offered to clients to connect to the internet through their mobile devices and **GSM connectivity** for sending and receiving SMS messages and personal data.

### Technical data:

**Propulsion:** 2 engines Pratt & Whitney CF6-80

**Range:** 9.600km

**Length:** 63,67m

**Wingspan:** 60,30m

**Seats:** 292





# A-330/200

## Symbol of transformation

On **December 29th, 2015**, the first **A-330/200** christened "**Oaxaca**" arrived and Iberia became the first airline to receive this model manufactured in Europe.

The Oaxaca aircraft is an **A-330-200 MTOW 242t**, a more modern and improved version of that type of aircraft. With a length of **59 meters** and a wingspan of **60 meters**, it can carry **19** passengers in Business Class and **269** in Economy.

The Airbus A-330/200 are **modern, fuel-efficient twin-engine aircraft**, providing both **cost efficiencies** and **environmental benefits**.

Its range can reach up to **11,000 kilometers**, so that it can fly the company's longest routes, such as Buenos Aires or Montevideo.

### Technical data:

**Propulsion:** 2 engines General Electric

**Range:** 11.000km

**Length:** 59,00m

**Wingspan:** 60,30m

**Seats:** 288



## New generation

- **A-320neo**: Environmental friendly
- **A-350**: Innovation and sustainability
- **A-321XLR**: Versatility



# A-320neo

## Environmental friendly

In tribute to the airline industry, **Iberia's first two A320neo** aircraft to arrive in **2018** were named "**Patrulla Aguila**" and "**Getafe, Cuna de la Aviacion Española**".

Following this same **aviation theme**, several of the following aircraft are named after **female aviators** such as **Amelia Earhart**, the first to fly alone across the Atlantic and whose example also served to pay a well-deserved tribute to all Iberia female employees.

The **acronym "neo"** stands for "**new engine option**", that makes the aircraft more environmental friendly, emitting **5,000 tons less CO2 per year** and **50% less NOx**.

Equipped with **Leap-1A CFM engines**, it is also **50% quieter**.

### Technical data:

.....

**Propulsion:** 2 engines CFM Leap-1A

**Range:** 3.000km

**Length:** 37,57m

**Wingspan:** 35,80m

**Seats:** 186





# A-350

## Innovation and sustainability

The **Airbus A-350/900** is a **new-generation aircraft** with a focus on **sustainability**.

Thanks to the use of new materials such as carbon and glass fibres, titanium and an aluminium alloy, as well as a reduction in the amount of paint applied, the aircraft's weight has been reduced and, therefore, **fuel consumption and CO2 emissions by 25%**.

In addition, its improved aerodynamics, cabin insulation and the addition of RR Trent XWB-84 engines make the A-350/900 **the quietest aircraft on the market**.

Finally, the A-350/900 was delivered by Airbus with a **Performance Improvement Package (PIP)** that represents a reduction in fuel consumption of around **25%** compared to previous deliveries of the same model.

### Technical data:

**Propulsion:** 2 engines Rolls Royce Trent XWB-84

**Range:** 12.500km

**Length:** 66,80m

**Wingspan:** 64,75m

**Seats:** 348





# A-321XLR

## Great versatility

**IAG Group** has placed an order for for **8** Airbus A321XLR aircraft for **Iberia** and 6 for Aer Lingus, plus 14 options.

Both airlines are among the **launch customers** for these long-range narrow-body aircraft.

First deliveries are scheduled for **2023**.

The A321XLR will be the **first narrow-body aircraft** that will enable flights beyond the **U.S.A east coast and Canada**.

For Iberia, this is a new type of aircraft that will allow it to **expand and operate new transatlantic destinations** and **increase frequencies** in key markets.

In addition, these aircraft will also provide **further cost efficiencies** and **environmental benefits**.





# 40th Anniversary

Iberia & Airbus 1981- 2021